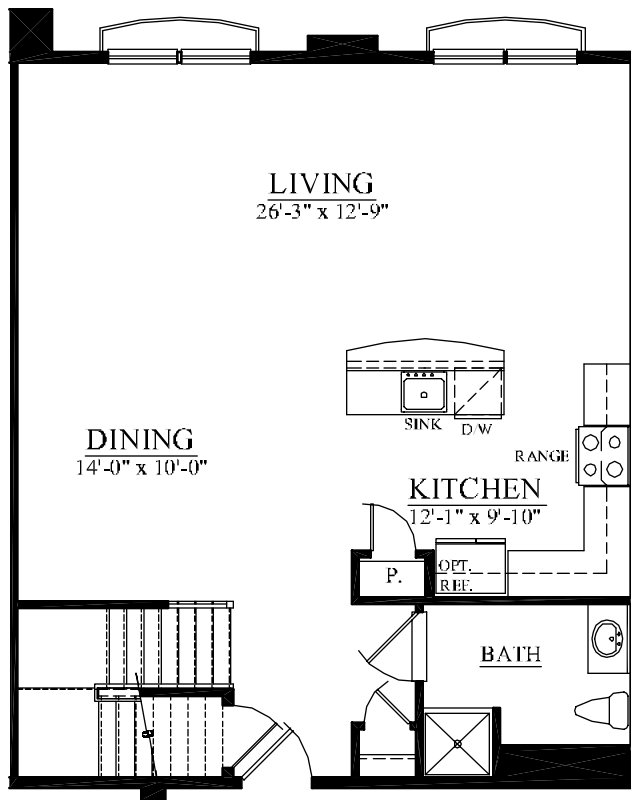


the **lofts**  
at washington town center

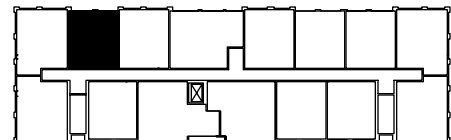
Building "D-2"



**UNIT #521 (1ST FLOOR)**  
**1,733 TOTAL LIVING SQ. FT.**



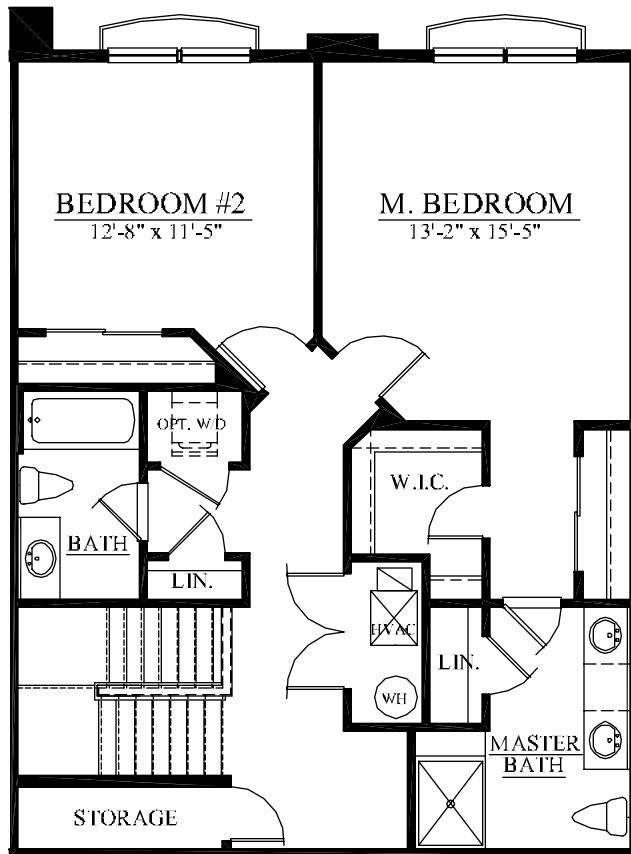
*25 Years of Building Excellence*



All dimensions are approximate and subject to variation. Continuing a policy of research and development, the builder reserves the right to make modifications in design and products without notice or obligation. Please see a Sales Associate for any additional options that may be available.

the **lofts**  
at washington town center

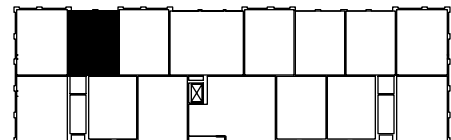
Building "D-2"



**UNIT #521 (2ND FLOOR)**  
**1,733 TOTAL LIVING SQ. FT.**



*25 Years of Building Excellence*



All dimensions are approximate and subject to variation. Continuing a policy of research and development, the builder reserves the right to make modifications in design and products without notice or obligation. Please see a Sales Associate for any additional options that may be available.