

the **lofts**  
at washington town center

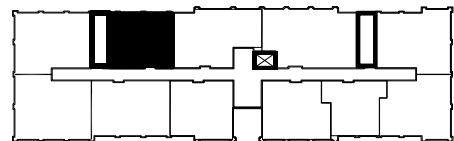
**Building "E"**



**UNIT #407 (2ND LEVEL)**  
**794 TOTAL LIVING SQ. FT.**



*25 Years of Building Excellence*



All dimensions are approximate and subject to variation. Continuing a policy of research and development, the builder reserves the right to make modifications in design and products without notice or obligation. Please see a Sales Associate for any additional options that may be available.