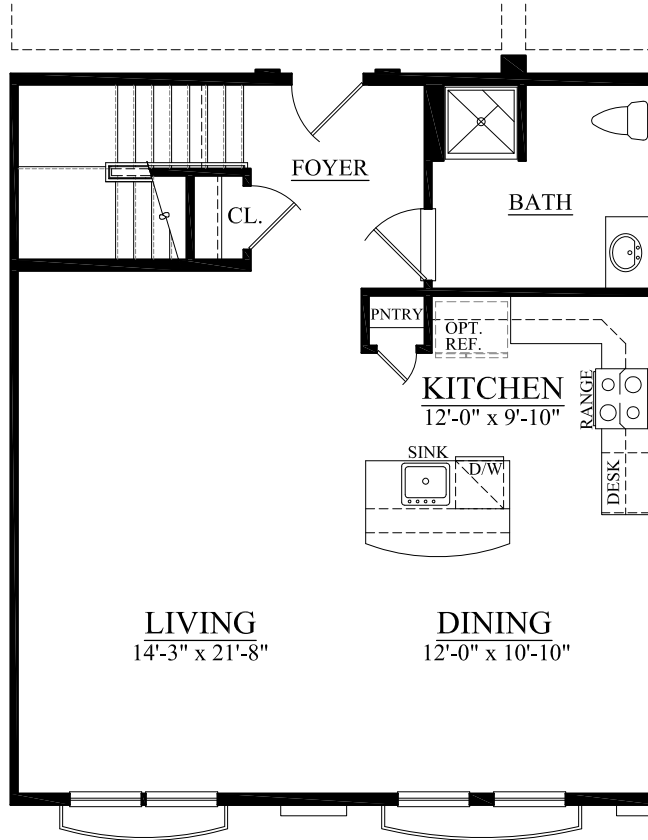


the **lofts**
at washington town center

Building "F"

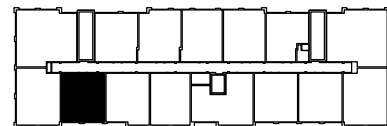


UNIT #627 (1ST FLOOR)
1,584 TOTAL LIVING SQ. FT.



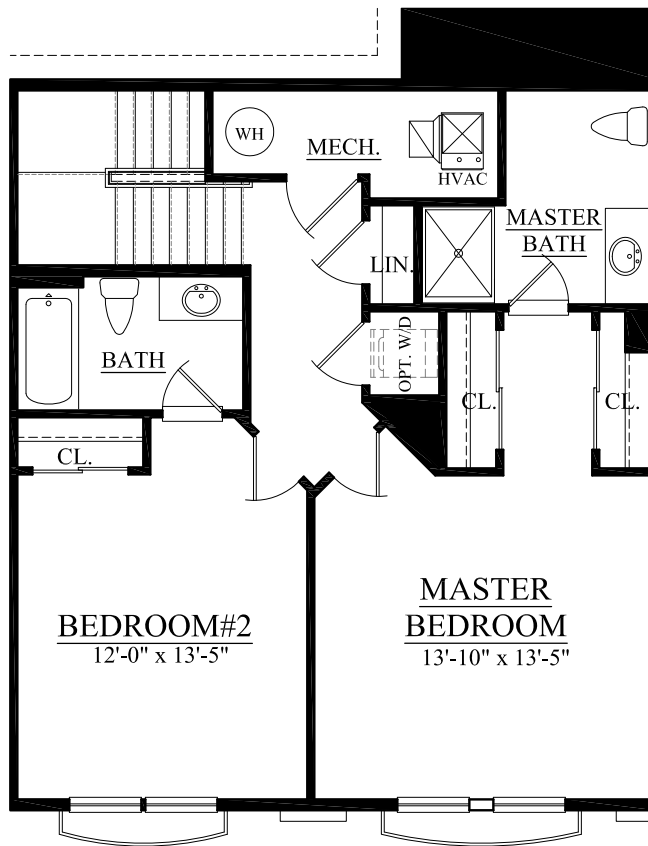
30 Years of Building Excellence

All dimensions are approximate and subject to variation. Continuing a policy of research and development, the builder reserves the right to make modifications in design and products without notice or obligation. Please see a Sales Associate for any additional options that may be available.



the **lofts**
at washington town center

Building "F"

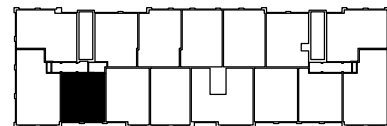


UNIT #627 (2ND FLOOR)
1,584 TOTAL LIVING SQ. FT.



30 Years of Building Excellence

All dimensions are approximate and subject to variation. Continuing a policy of research and development, the builder reserves the right to make modifications in design and products without notice or obligation. Please see a Sales Associate for any additional options that may be available.



THIRD FLOOR 6/14/12 9/16/14
8/15/14