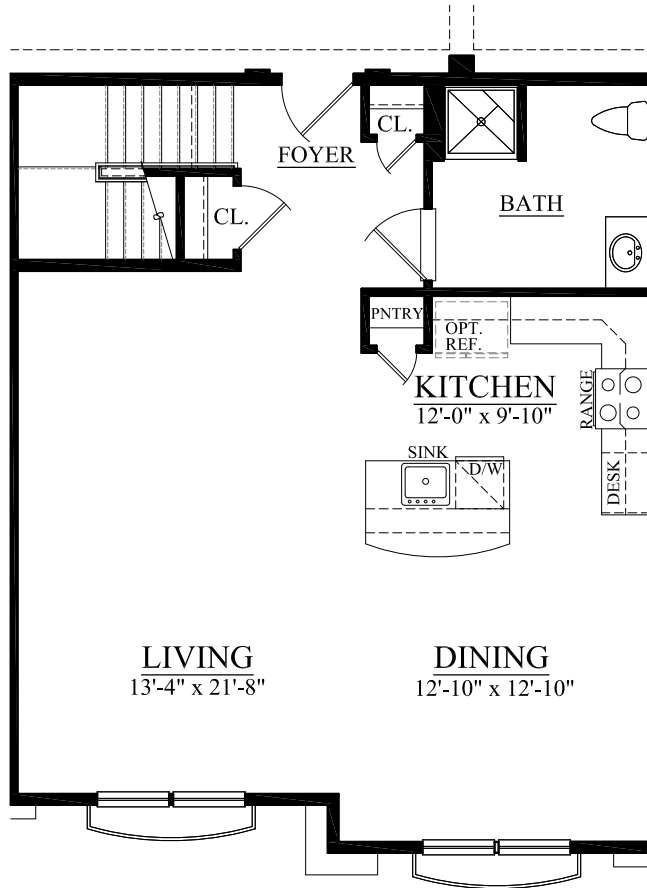


the **lofts**  
at washington town center

Building "F"

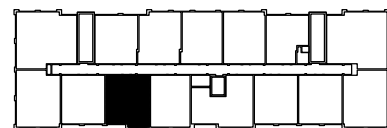


**UNIT #625 (1ST FLOOR)**  
**1,727 TOTAL LIVING SQ. FT.**



*30 Years of Building Excellence*

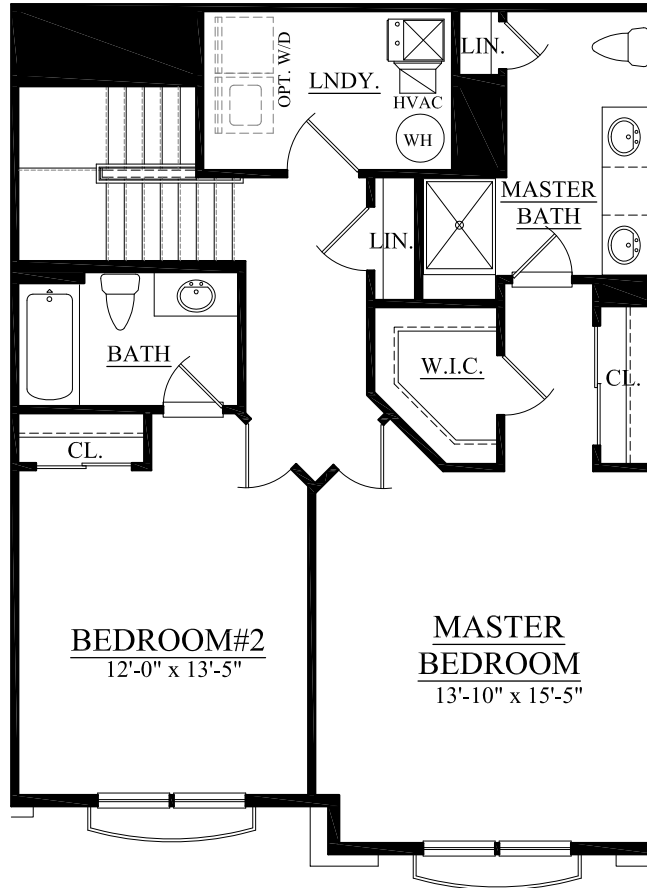
All dimensions are approximate and subject to variation. Continuing a policy of research and development, the builder reserves the right to make modifications in design and products without notice or obligation. Please see a Sales Associate for any additional options that may be available.



SECOND FLOOR 6/14/12 9/16/14  
8/15/14

the **lofts**  
at washington town center

Building "F"

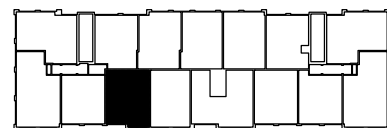


**UNIT #625 (2ND FLOOR)**  
1,727 TOTAL LIVING SQ. FT.



*30 Years of Building Excellence*

All dimensions are approximate and subject to variation. Continuing a policy of research and development, the builder reserves the right to make modifications in design and products without notice or obligation. Please see a Sales Associate for any additional options that may be available.



6/14/12 9/16/14  
8/15/14