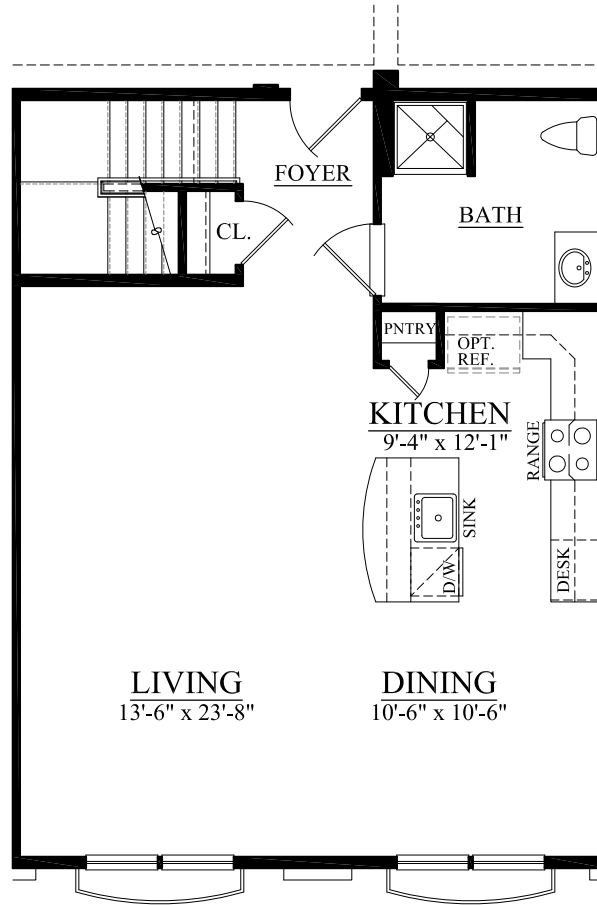


the **lofts**  
at washington town center

Building "F"

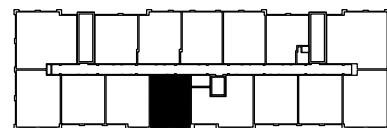


**UNIT #623 (1ST FLOOR)**  
**1,630 TOTAL LIVING SQ. FT.**



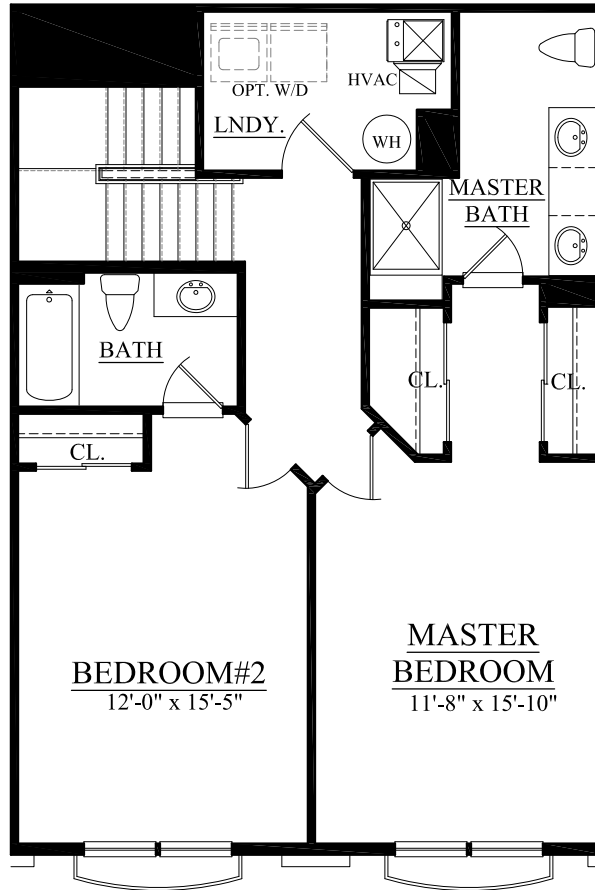
*30 Years of Building Excellence*

All dimensions are approximate and subject to variation. Continuing a policy of research and development, the builder reserves the right to make modifications in design and products without notice or obligation. Please see a Sales Associate for any additional options that may be available.



the **lofts**  
at washington town center

Building "F"



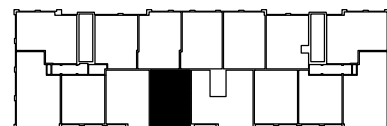
**UNIT #623 (2ND FLOOR)**

1,630 TOTAL LIVING SQ. FT.



*30 Years of Building Excellence*

All dimensions are approximate and subject to variation. Continuing a policy of research and development, the builder reserves the right to make modifications in design and products without notice or obligation. Please see a Sales Associate for any additional options that may be available.



6/14/12 9/16/14  
8/15/14