

the lofts
at washington town center

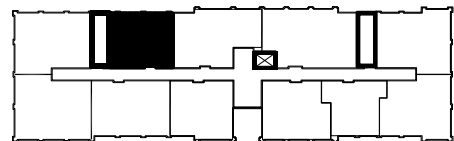
Building "E"



UNIT #407 (2ND LEVEL)
794 TOTAL LIVING SQ. FT.



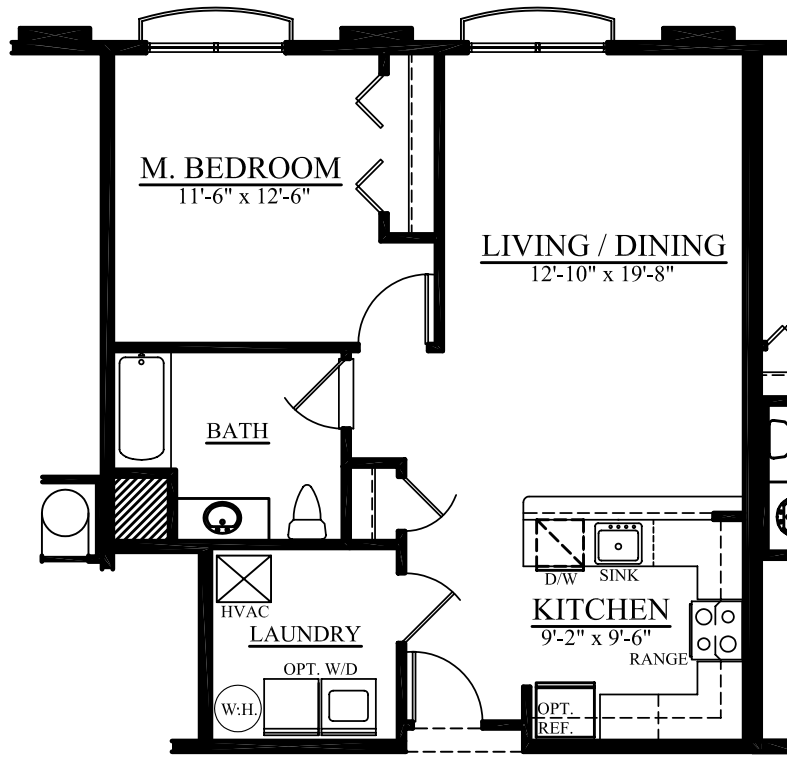
25 Years of Building Excellence



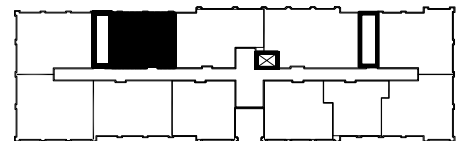
All dimensions are approximate and subject to variation. Continuing a policy of research and development, the builder reserves the right to make modifications in design and products without notice or obligation. Please see a Sales Associate for any additional options that may be available.



Building "E"



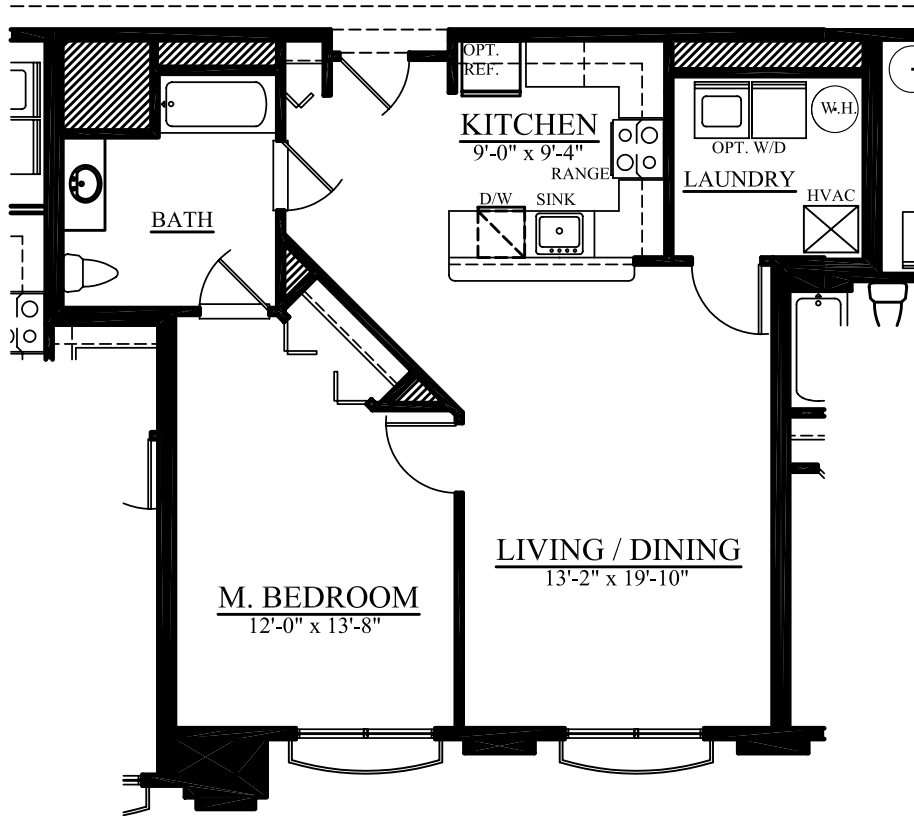
UNIT #417 (3RD LEVEL)
794 TOTAL LIVING SQ. FT.



All dimensions are approximate and subject to variation. Continuing a policy of research and development, the builder reserves the right to make modifications in design and products without notice or obligation. Please see a Sales Associate for any additional options that may be available.

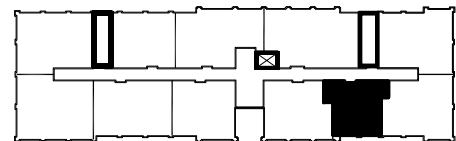


Building "E"



UNIT #432 (3RD LEVEL)

903 TOTAL LIVING SQ. FT.



All dimensions are approximate and subject to variation. Continuing a policy of research and development, the builder reserves the right to make modifications in design and products without notice or obligation. Please see a Sales Associate for any additional options that may be available.